

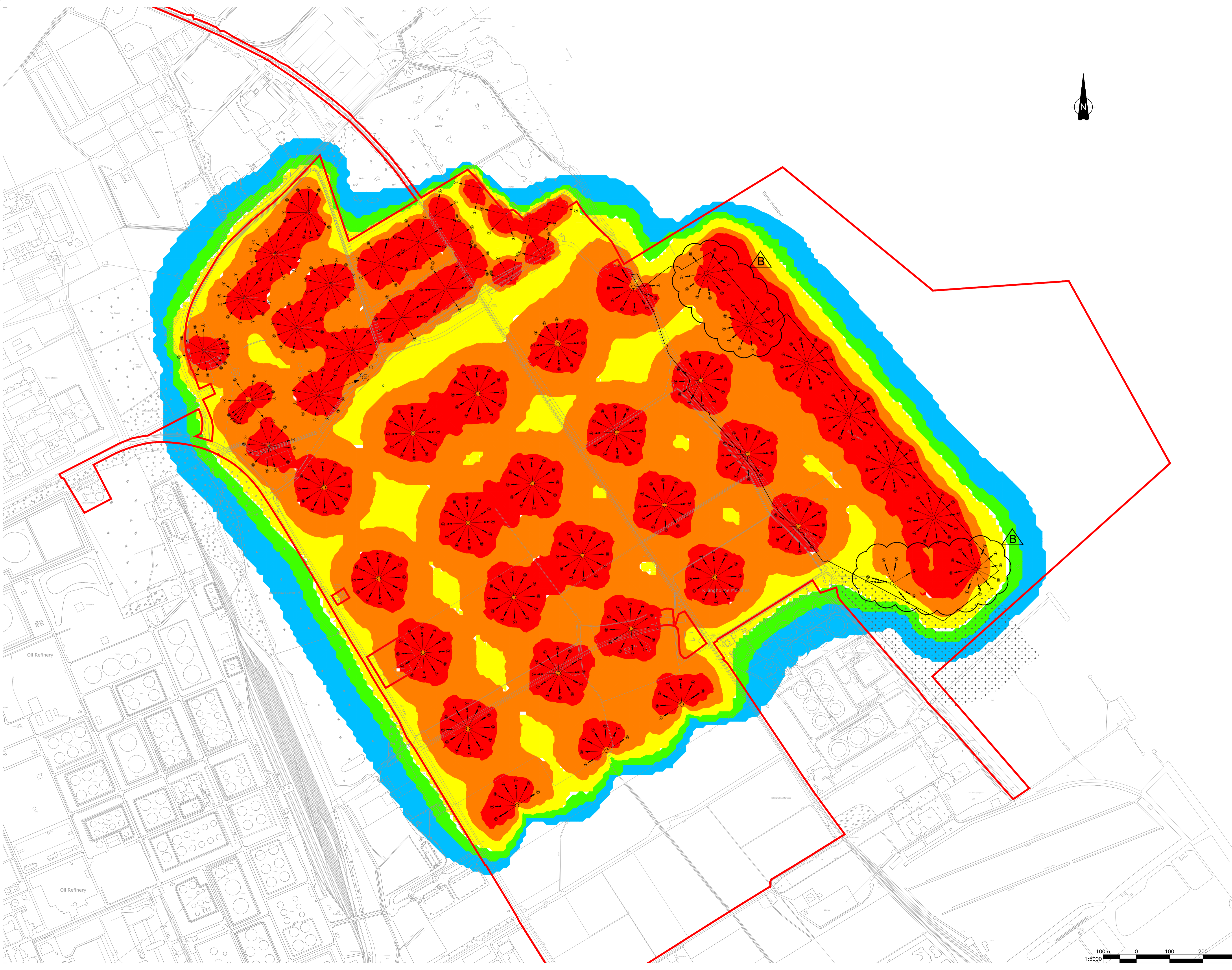


Able Marine Energy Park

Material Change 2

Drawing AME-03942B

(referenced in response to question 5.0.5)



Key & Notes

- Planning Application Boundary
- Proposed Lighting Column
- Lighting 0 to 1 LUX
- Lighting 1 to 3 LUX
- Lighting 3 to 10 LUX
- Lighting 10 to 25 LUX
- Lighting 25+ LUX
- Intertidal area compensated for due to Operational Disturbance



R	24/03/2012	Quay & Lighting Columns Amended	EA	RC	RC
A	15/06/2012	Preliminary Issue	TW	RC	RC
Rev.	Date	Comments	Des.	Chk.	App.

ABLE UK Limited
ABLE House
Bilham Road Industrial Estate
Teddington, TW20 1JY
United Kingdom
Tel: +44(0)1842 806880
Fax: +44(0)1842 635655

Project: ABL Marine Energy Park
Client: ABL Humber Ports Ltd
Drawing Title: Proposed Lighting LUX Range in Level

PRELIMINARY

Scale:	Drawn By:	Checked By:	Approved By:
1:5000@A1	TW	RC	RC
Date:	15/06/2012	15/06/2012	15/06/2012
Drawing No:	AME-03942	Revision:	B

